	<b>ITTC – Recommended Procedures and Guidelines</b>	<b>7.5-02 -03-02.4</b> Page 1 of 11	
	<b>Nominal Wake Measurement by a 5-Hole Pitot Tube</b>	Effective Date 2011	Revision 01

## ITTC Quality System Manual Recommended Procedures and Guidelines

### Procedure

## Nominal Wake Measurement by a 5-Hole Pitot Tube


7.5	Process Control
7.5-02	Testing and Extrapolation Methods
7.5-02-03	Propulsion
7.5-02-03-02	Propulsor
7.5-02-03-02.4	Nominal Wake Measurement by a 5-Hole Pitot Tube

### Disclaimer

All the information in ITTC Recommended Procedures and Guidelines is published in good faith. Neither ITTC nor committee members provide any warranties about the completeness, reliability, accuracy or otherwise of this information. Given the technical evolution, the ITTC Recommended Procedures and Guidelines are checked regularly by the relevant committee and updated when necessary. It is therefore important to always use the latest version.

Any action you take upon the information you find in the ITTC Recommended Procedures and Guidelines is strictly at your own responsibility. Neither ITTC nor committee members shall be liable for any losses and/or damages whatsoever in connection with the use of information available in the ITTC Recommended Procedures and Guidelines.

Updated / Edited by	Approved
Quality Systems Group of the 28 <sup>th</sup> ITTC	26 <sup>th</sup> ITTC 2011
Date 05/2017	Date 09/2011

	<b>ITTC – Recommended Procedures and Guidelines</b>	<b>7.5-02 -03-02.4</b> Page 2 of 11	
	<b>Nominal Wake Measurement by a 5-Hole Pitot Tube</b>	Effective Date 2011	Revision 01

## Table of Contents

<b>1. PURPOSE OF PROCEDURE..... 3</b>	<b>4.2 Pitot Tube Calibration..... 5</b>
<b>2. NOMENCLATURE..... 3</b>	<b>4.3 Data Reduction Equations..... 5</b>
<b>3. SHIP MODEL AND INSTRUMENT 3</b>	4.3.1 Horizontal-Vertical Method (Kh- Kv type)..... 6
<b>3.1 Ship Model ..... 3</b>	4.3.2 Omni-directional type method... 6
<b>3.2 5-hole Pitot-tube..... 3</b>	4.3.3 Modified omni-directional type method..... 6
3.2.1 Choice of probe type ..... 4	<b>4.4 Analysis ..... 7</b>
3.2.2 Choice of probe size..... 4	<b>4.5 Measurements ..... 8</b>
<b>3.3 Traverse System ..... 4</b>	<b>4.6 Reporting..... 10</b>
<b>3.4 Pressure Transducer ..... 5</b>	<b>5. UNCERTAINTY ANALYSIS ..... 10</b>
<b>4. DESCRIPTION OF PROCEDURE.. 5</b>	<b>6. REFERENCES ..... 10</b>
<b>4.1 Operation mode of 5-hole pitot tube ..... 5</b>	

## Nominal Wake Measurement Procedure by a 5-Hole Pitot Tube

### 1. PURPOSE OF PROCEDURE

The purpose of the procedure is to provide guidelines to ensure the consistency of the methodology and the acquisition of the correct nominal wake-field at the propeller disk of a ship model utilizing a 5 hole pitot-tube.

### 2. NOMENCLATURE

$V_x$	Axial velocity component	[m/s]
$V_t$	Tangential velocity component	[m/s]
$V_r$	Radial velocity component	[m/s]
$\rho$	Mass density	[kg/m <sup>3</sup> ]
$q$	Magnitude of the velocity	[m/s]

$$q = \sqrt{V_x^2 + V_t^2 + V_r^2}$$

$\theta$	Yaw angle for Pitot tube or Circumferential angle in propeller plane	[°]
$\varphi$	Pitch angle	[°]
$P_C, P_T, P_B, P_P, P_S, P_{ST}$	Pressure at the centre, top, bottom, port, starboard hole and static, respectively.	
$P_{PS}$	Pressure difference between the port and starboard side pressure hole	
$P_{BT}$	Pressure difference between the bottom and top side pressure hole	
$P_{NS}$	Pressure difference between the nose (center) and static side pressure hole	
$H_{dyn}$	Dynamic pressure ( $0.5\rho q^2$ )	

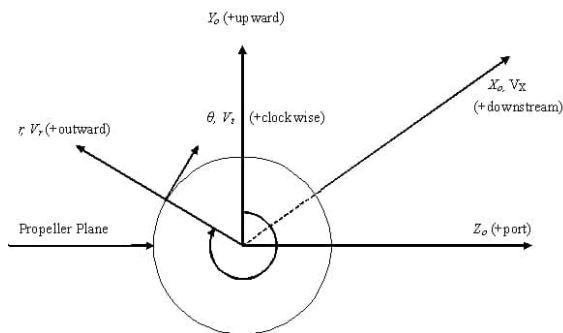


Figure 1 Definition of the velocity components

The coordinate system for the velocity components is shown in Figure 1, and the pressure components at each pressure hole for the 5 hole pitot-tube are given in Figure 2.

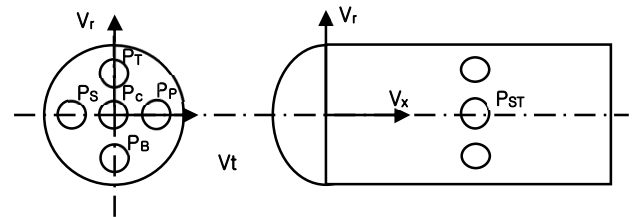


Figure 2 Position of the pressure holes

### 3. SHIP MODEL AND INSTRUMENT

#### 3.1 Ship Model

A full ship model is required for the measurement of the nominal wake at the propeller plane. The specifications for the ship model should comply with the dedicated procedure in the ITTC 7.5-01-01-01 Quality Manual.

The test for wake measurements is performed on the same model as used in the resistance and self-propulsion tests, without any additional appendages and surface treatment. The ship model should be assembled with all the required appendages, fin stabilizer, and turbulence stimulators that can influence the propeller inflow. Only the rudder can be removed to allow easier access to the propeller disk.

#### 3.2 5-hole Pitot-tube

The head of each Pitot tube contains 5 holes joined by small diameter internal tubes: one on the center, one pair aligned with the radial plane and the other pair in the tangential plane.

### 3.2.1 Choice of probe type

There are several varieties of multi-hole Pitot probes. Among them, the 5-hole Pitot tube has the capability to measure the three components of velocity and has also been widely used for towing tank tests. Currently, there are several types of 5-hole Pitot tubes: the spherical probe, the Conrad [1] type, the conical type, and the pyramidal type among others. Each of these probes has their own advantages and disadvantages. For instance, a spherical 5-hole Pitot probe is not easily made small. However, the analysis method is based on the theory of potential flow around the sphere. On the other hand, the Conrad type is easy to make small, but has decreased measurement accuracy for oblique flow. For this reason, specific choice of probes should be made with the specific measurements in mind.

### 3.2.2 Choice of probe size

For the determination of the probe size, the relation  $VD/\nu > 1000$  should be used [2], where  $D$  is the Probe diameter (m),  $V$  is the inflow velocity (m/s). Since the order of  $Re$  is around  $10^6$  in a model test, this leads the probe diameter  $D$  to be the order of  $L_{pp}/1000$ . For example in the case of a 6 m-long model, the diameter of the probe should be around 6 mm.

For the diameter of the pressure holes, the relation  $Vd/\nu > 100$  should be used [1], where  $d$  is the diameter of the pressure hole. From the relation  $VD/\nu > 1000$  and  $Vd/\nu > 100$ ,  $d/D$  would be on the order of 0.1. This value should be used as a reference to determine the size of the pressure hole.

## 3.3 Traverse System

The measurement is executed by using a rake assembly of multiple Pitot tubes or a single

probe traversing system [10], both of which are widely used for ship model wake measurements.

The rake systems with multiple 5-hole Pitot-tubes enable efficient and accurate measurements by rotating the rake at the centre of the propeller axis. The angle of the Pitot tube rake is controlled by a stepping motor. Examples of a typical rake traverse system are shown in Figure 3a and 3b.

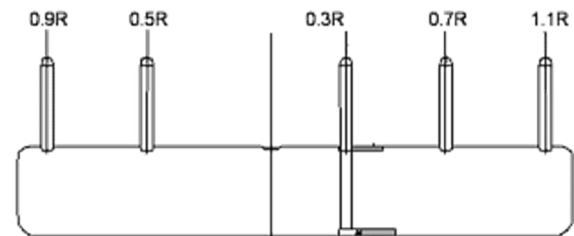


Figure 3a: Rake of pitot tubes

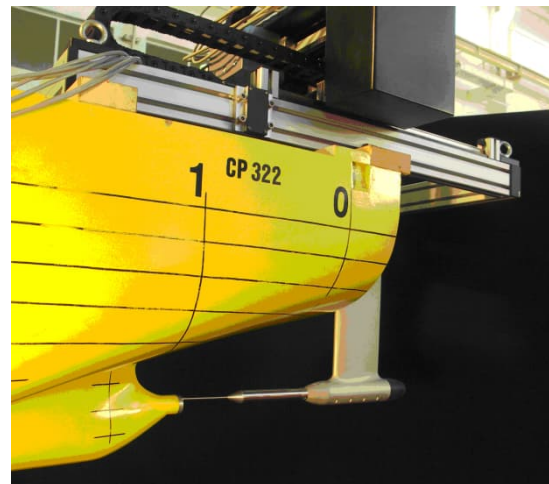


Figure 3b: Single probe traverse system

Both the model and the carriage mounted traverse system can be used with either single or multiple 5-hole Pitot-tubes. The traverse system should be designed to cover an area of at least the draft by half of the beam of a model ship.

### 3.4 Pressure Transducer

The capacity of the pressure transducers is dependent on the maximum flow speed. It is recommended that the calibration of each pressure transducer be performed quarterly, or before each use, in order to insure the quality of measurements.

## 4. DESCRIPTION OF PROCEDURE

A wake measurement test is conducted to determine the axial, radial and tangential velocity components in the propeller plane.

### 4.1 Operation mode of 5-hole pitot tube

Though Pitot tubes can be operated in nulling and non-nulling modes, generally only the non-nulling mode is used, and this procedure is for use of the Pitot tube in non-nulling mode.

In non-nulling mode, the probe undergoes an extensive calibration to determine the magnitude and the direction of flow with respect to the coordinate system of a probe. It requires the reverse technique to calculate the magnitude and the direction of flow from the pressure measurement. It has the advantage of measuring the pressure from the flow field at a given probe installation. Treaster and Yocum [3] as well as Morrison et. al. [4] suggested the non-nulling mode measurement by means of a calibration chart.

### 4.2 Pitot Tube Calibration

The calibration process compensates for the manufacturing inaccuracy and the inability of an analytical solution for the typical type of probe geometry. Specifically in the non-nulling mode, the magnitude and direction of the flow should be correlated to the pressure at the pressure hole through the calibration. A calibration apparatus, which can control pitch and yaw angle independently, is shown in Figure 4. The probe is set

in the calibration device, and it is placed on the towing carriage. The carriage is moved at a pre-determined speed that signifies the known inflow velocity to the Pitot-tube. The speed of calibration is determined according to this model ship speed. Reynolds effects must be considered in the calibration, but the effect of Reynolds number can be negligible in the range of the model ship speed (Kim et al., 1997). To reduce the effect of the water surface, the wake rake should be submerged more than the length of the Pitot tube rake. This method reduces the wall effect that is caused when the calibration is carried out in the water channel.

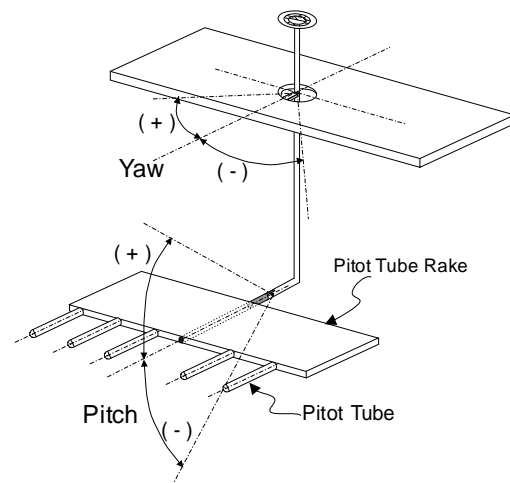


Figure 4 Schematic view of the calibration device

The calibration/data reduction methods can be placed in two categories. In this procedure, the horizontal-vertical and omni-directional type methods will be discussed.

### 4.3 Data Reduction Equations

Three different data reduction methods are introduced through the different types of calibration and analysis methods, typically used during towing tank experiments.

The horizontal-vertical or omni-directional type method is recommended to be used in the wake measurement of high-speed ships.

However, when high pitch or yaw angles (larger than 30°) are expected, the modified omni-directional type method is strongly recommended to increase the measurement quality.

#### 4.3.1 Horizontal-Vertical Method (Kh-Kv type)

In the horizontal-vertical method, the horizontal and vertical components of velocity can be determined independently. Pien's method [6] is typical for the horizontal-vertical method. Using this method,  $K_H$ ,  $g_{HP}$  and  $g_{HS}$  can be obtained by a stepwise change of  $\theta$ , every 5 degrees from -30 degrees to 30 degrees, under  $\phi=0$ . Similarly,  $K_V$  and  $g_{VT}$ ,  $g_{VB}$  are defined by a stepwise change of  $\phi$  under keeping  $\theta=0$ . From there, calibration curves can be obtained.

Pitch angle coefficient:

$$K_V = \frac{P_T - P_B}{2P_C - P_T - P_B}$$

Vertical velocity coefficient:

$$g_{VT} = \frac{P_C - P_T}{1/2 \rho q^2}$$

$$g_{VB} = \frac{P_C - P_B}{1/2 \rho q^2}$$

Yaw angle coefficient:

$$K_H = \frac{P_S - P_P}{2P_C - P_S - P_P}$$

Horizontal velocity coefficient:

$$g_{HP} = \frac{P_C - P_P}{1/2 \rho q^2}$$

$$g_{HS} = \frac{P_C - P_S}{1/2 \rho q^2}$$

#### 4.3.2 Omni-directional type method

Through the use of the omni-directional method (Fujita(1979), Olivieri et al.(1998)), the angle coefficients  $K$ ,  $L$ ,  $M$  and  $P$  are obtained from the pressure data with various combinations of  $\theta$  and  $\phi$ . The angle coefficients  $K$  and  $L$  can be plotted along  $\theta$  and  $\phi$  constant lines as shown in Fig. 6. The velocity and pressure coefficients are simultaneously obtained as shown in Fig. 7 and 8. In the figures,  $P_0$  and  $M_0$  are the values of  $P$  and  $M$  at  $\theta$  and  $\phi$  are 0. There are two kinds of calibration modes: pitch-yaw mode and yaw-pitch mode. The method used is determined according to the setting order of calibration. If the calibration is conducted in a pitch-yaw mode, the pitch angle of the calibration device is rotated and from there, the yaw angle is rotated. If it is conducted in the yaw-pitch mode, the order of setting is reversed.

Angle coefficients:

$$K = \frac{P_T - P_B}{4P_C - P_T - P_B - P_S - P_P}$$

$$L = \frac{P_S - P_P}{4P_C - P_T - P_B - P_S - P_P}$$

Velocity coefficient:

$$M = \frac{4P_C - P_T - P_B - P_S - P_P}{H_{dyn}}$$

Static pressure coefficient:

$$P = \frac{P_C - P_{st}}{H_{dyn}}$$

#### 4.3.3 Modified omni-directional type method

In the modified omni-directional type method, three pressure differences:  $P_{PS}$ ,  $P_{BT}$ , and  $P_{NS}$  are measured simultaneously. The advantage of using this method is the reduction of the number of pressure sensors and data channels ranging from 3 to 5 for each probe. The

measured pressures provide correlation factors such as  $C_{pitch}(\varphi, \theta)$ ,  $C_{yaw}(\varphi, \theta)$  and  $C_q(\varphi, \theta)$ .

Pitch angle correlation factor:

$$C_{pitch}(\varphi, \theta) = \frac{P_{BT} + K_{\varphi} \text{sign} \left[ \left| \frac{1}{2} \rho q^2 - P_{NS} \right|, P_{BT} \right]}{\frac{1}{2} \rho q^2}$$

Yaw angle correlation:

$$C_{yaw}(\varphi, \theta) = \frac{P_{PS} + K_{\theta} \text{sign} \left[ \left| \frac{1}{2} \rho q^2 - P_{NS} \right|, P_{PS} \right]}{\frac{1}{2} \rho q^2}$$

Velocity correlation factor:

$$C_q(\varphi, \theta) = \frac{P_{NS} + K_q (|P_{BT}| + |P_{PS}|)}{\frac{1}{2} \rho q^2}$$

where  $\text{sign}[a, b]$  is defined by the product the absolute value of  $a$  and the sign of  $b$ .

#### 4.4 Analysis

In the horizontal-vertical method, as shown in Figure 5, the measured pressure at the hole of each 5-hole Pitot probe,  $K_H$  is estimated. From the characteristic of the  $K_H - \theta$  curve,  $\theta$  is determined. In the case that the flow comes from the port and goes to the starboard side,  $g_{HP}$  is determined from the characteristic curve of  $g_{HP} - \theta$  and estimated  $\theta$ . Then  $q$  is evaluated by

$$q = \sqrt{\frac{2(P_C - P_P)}{\rho g_{HP}}}$$

In the case that the flow comes from the port side,  $g_{HS} - \theta$  should be used. From the estimated  $q$ , the axial and horizontal velocity components can be estimated by  $V_X = q \cos \theta$  and  $V_Y = q \sin \theta$ . The vertical component of velocity can be estimated in a similar manner. The analysis procedure is very simple but one-to-one

correspondence can fail when the flow angle exceeds the limit as shown in Figure 5.

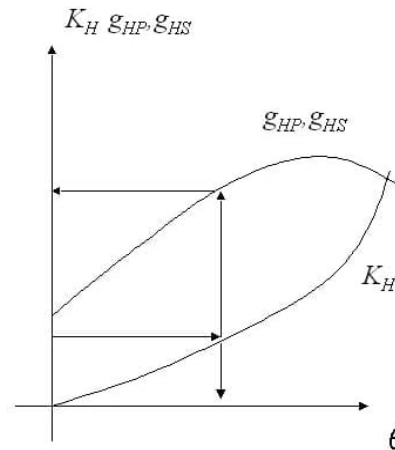


Figure 5 Example of horizontal-vertical calibration curves

In the omni-directional method,  $K$  and  $L$  are estimated from the measured pressure at each hole of the 5-hole pitot-probe. From the calibration charts ( $K, L$ ) and  $(\theta, \varphi)$ ,  $\theta$  and  $\varphi$  are interpolated two-dimensionally. From  $\theta$  and  $\varphi$ ,  $M$  and  $P$  can be evaluated using the characteristic charts of  $M(\theta, \varphi)/M_0$  and  $P(\theta, \varphi)/P_0$ . Therefore, the velocity  $q$  and the static pressure  $p_{stat}$  can be evaluated from  $M$  and  $P$ .

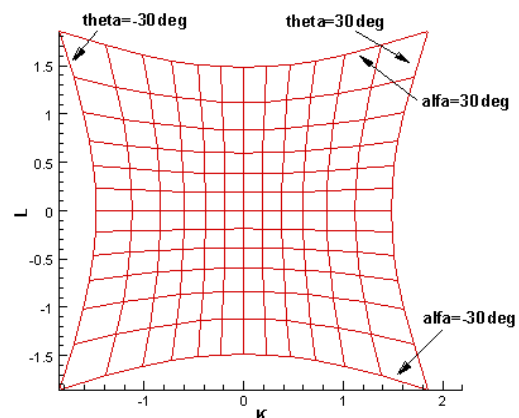


Figure 6 Example of the angle coefficients  $K$  and  $L$  for the omni-directional analysis method

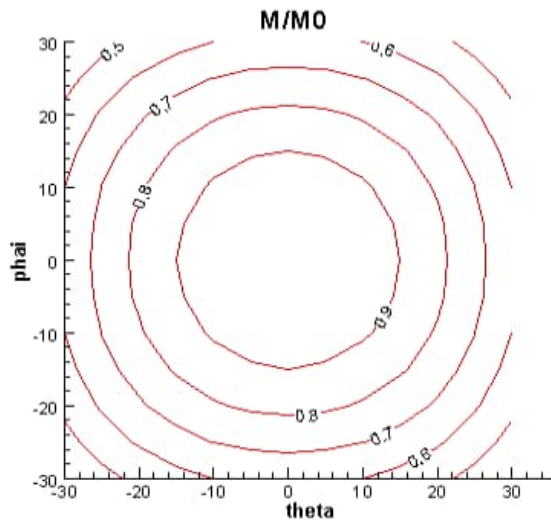


Figure 7 Example of the velocity coefficient for the omni-directional analysis method

The modified omni-directional method has an advantage of reducing the number of data channels, but it has an intrinsic one-to-one mapping problem when both pitch and yaw angles are as large as those shown in Fig. 9a.

This problem is solved however by introducing the additional parameters  $K_\varphi$ ,  $K_\theta$ ,  $K_q$ .

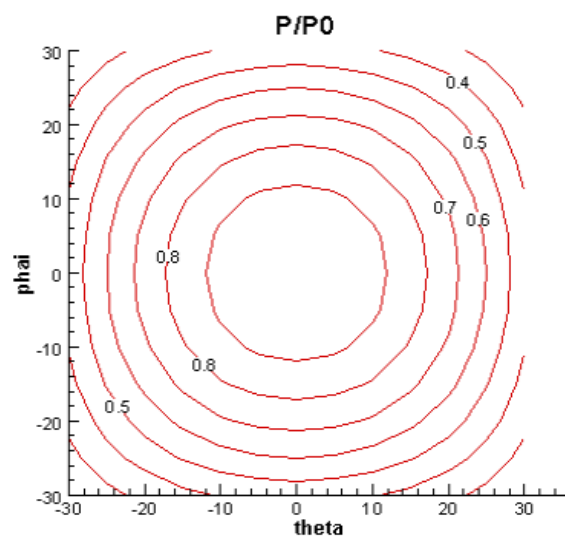
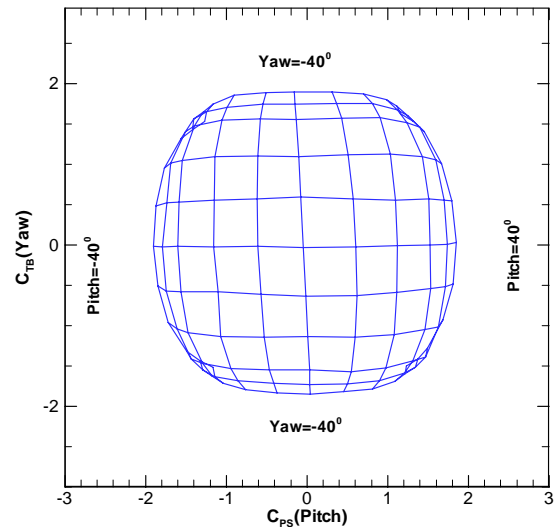
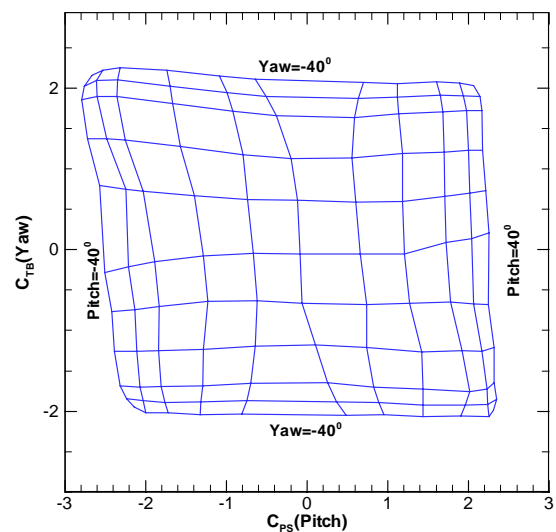


Figure 8 Example of the static pressure coefficient for the omni-directional analysis method



(a) without  $K_\varphi$ ,  $K_\theta$ ,  $K_q$



(b) with  $K_\varphi=0.9$ ,  $K_\theta=0.4$ ,  $K_q=0.2$

Figure 9 Calibration chart of a spherical type probe

The best value of  $K_\varphi$ ,  $K_\theta$ ,  $K_q$  should be determined for each type of probe. In this method, the iterative approach is needed to determine the velocity vectors,  $C_{pitch}(\varphi, \theta)$ ,  $C_{yaw}(\varphi, \theta)$ ,  $C_q(\varphi, \theta)$  values are calculated from the measured pressure and the magnitude of a velocity,  $q$ . Since  $q$  is not a known value but has to be found,



$q$  is assumed in the first iteration (usually the speed of the model ship). The prime is the intermediate value in the iteration step. Then  $(\varphi', \theta')$  are calculated from  $C_{pitch}(\varphi, \theta)$  and  $C_{yaw}(\varphi, \theta)$  using two-dimensional interpolation.  $C'_q(\varphi, \theta)$  can be calculated from  $C_q(\varphi, \theta)$  using  $(\varphi', \theta')$ . Next,  $q$  can be calculated from the definition of  $C_q$ . Finally, the assumed value  $q'$  and the calculated  $q$  are compared. If the difference of these values does not satisfy a tolerance interval, repeat the next step. If it does satisfy the tolerance interval, then the velocity components of the flow field are calculated.

The final velocity components are determined from the obtained  $((q, \theta, \phi))$ .

For pitch-yaw mode,

$$\begin{aligned} V_x &= q \cos(\varphi) \cos(\theta) \\ V_r &= q \cos(\varphi) \sin(\theta) \\ V_\theta &= q \sin(\varphi) \end{aligned}$$

For yaw-pitch mode,

$$\begin{aligned} V_x &= q \cos(\theta) \cos(\varphi) \\ V_r &= q \sin(\theta) \\ V_t &= q \cos(\theta) \sin(\varphi) \end{aligned}$$

## 4.5 Measurements

A typical model installation is shown in Figure 10. The wake rake is installed in the propeller shaft and the rake used in the calibration is also used for the wake measurement. Several rakes are prepared according to the model propeller diameter, which can minimize the positioning errors. The position of the tip of the Pitot probe is located at the propeller generating line and the wake is measured every  $10^\circ$  or less for the whole propeller plane. Figure 11 shows the measurement grid for wake measurement.

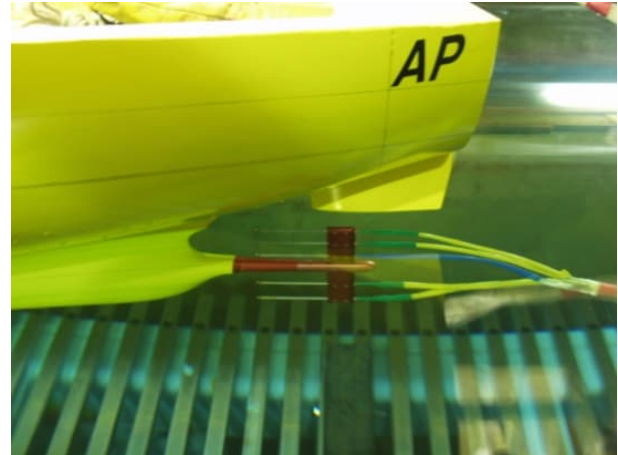


Figure 10 Pitot tube rake arrangement for wake measurement

The data collection time and sampling frequency of the measurement depends on the unsteadiness of the flow. In a towing tank test, it may be difficult to have sufficient collection time and typically a five to ten seconds run time is used. For reliability of measurements, a thirty second sampling time is recommended for a couple of specially chosen points.

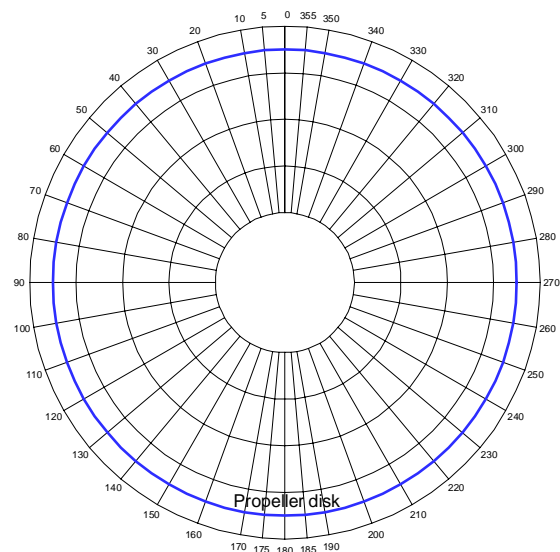



Fig. 11 Measurement grid for wake measurement

 INTERNATIONAL TOWING TANK CONFERENCE	<b>ITTC – Recommended          Procedures and Guidelines</b>	<b>7.5-02          -03-02.4</b> Page 10 of 11	
	<b>Nominal Wake Measurement by a 5-Hole          Pitot Tube</b>	Effective Date 2011	Revision 01

#### 4.6 Reporting

From the analysis results, iso-axial velocity contours are plotted to show the wake distribution at the propeller plane. The transverse flow direction at the propeller plane is easily seen by plotting these velocity vectors. At the same time, the speed distributions for  $V_x$ ,  $V_r$  and  $V_t$  normalized by towing speed can be given in the tabulated form along the probe angles for all investigated radii.

The velocity components at the propeller plane are considered to be a periodic function of period  $2\pi$  for each radius and represented by the Fourier series.

$$\begin{aligned}
 V_i &= a_o + \sum_{k=1}^n (a_k \cos(k\theta) + b_k \sin(k\theta)) \\
 &= a_o + \sum_{k=1}^n (c_k \cos(k\theta - \varphi_k))
 \end{aligned}$$

Circumferential mean velocity is the mean value of the measured velocity at the radius  $r$  and is computed as follows:

$$V_{Mi} = \frac{1}{2\pi} \int_0^{2\pi} V_i(\theta) d\theta$$

Total mean velocity is obtained from the value of the circumferential mean velocity from the propeller hub to the propeller tip at the propeller plane and is computed as follows:

$$V_{TMI} = \frac{2\pi \int_{r_h}^{r_p} V_{Mi} \cdot r \cdot dr}{\pi(r_p^2 - r_h^2)}$$

Wake fraction represents the nominal wake fraction without a propeller at the stern and is computed as follows:


$$w_N = 1 - \frac{V_A}{V} = 1 - V_{TMX}$$

#### 5. UNCERTAINTY ANALYSIS

Uncertainty analysis was performed following the ITTC standard method (ITTC, 1999, Coleman and Steele, 1999) and both bias and precision errors were considered. As sources of bias error, the resolution and nonlinearity of amplifiers, transducers, A/D converters, location of probes, carriage speed, water temperature, density and a tolerance interval of analysis program were considered. The sampled raw data were processed to determine the precision error for each measurement quantity. The uncertainty interval is determined by taking the root sum square of the bias error and the precision error multiplied by t-value in t distribution (Coleman and Steele, 1999). The two-dimensional chart calibration method for a 5-hole Pitot probe produces larger bias errors in the strong velocity defect region, since local flow angles out of the Pitot tube center become greater due to the small axial velocity components. The precision error was slightly greater than the bias error. The fluctuating local velocity components produce larger precision errors, even though the flexible tubing connecting the Pitot tube and the pressure transducers tend to damp the fluctuating pressure signals.

#### 6. REFERENCES

- [1] Laminar Boundary Layers, Ed. L. Rosenhead, Oxford Univ. press (1963)
- [2] Arts, T., Carbonaro, M., Charbonnier, J-M., Degrez, G., Olivari, D., Riethmuller, R.A., Van den Braembussche R.A., Measurement techniques in fluid dynamics, course notes presented by members of the faculty of the von Karman Institute for Fluid Dynamics, Chaussee de Waterloo, 72, B-1640, Rhode Saint Genese-Belgium, 81-115, (1994)

	<b>ITTC – Recommended Procedures and Guidelines</b>	<b>7.5-02 -03-02.4</b> Page 11 of 11	
	<b>Nominal Wake Measurement by a 5-Hole Pitot Tube</b>	Effective Date 2011	Revision 01

- [3] Treaster A.L., Yocum A.M., “The Calibration and Application of Five-Hole Probes”, ISA Transaction, Vol. 18, pp. 23-34. 1979
- [4] Morrison G.L., Schobeiri M.T., Pappu K.R., “Five-hole pressure probe analysis technique”, Vol 9, PP153-158, 1998
- [5] Kim W. J., Kim D.H., Yoon H.S., Moon D.Y., Van S.H. (1997) Study on the calibration of a five-hole Pitot-tube for the wake measurement (in Korean), Journal of the Society of Naval Architecture of Korea 34: 11-19.
- [6] Pien, P.C.,: Five – Hole Spherical Pitot Tube, David Taylor Model Basin Report No. 1229, May 1958
- [8] Fujita, T.,:On the Flow Measurement in High Wake Region at the Propeller Plane, JSNAJ, vol 145, pp.1-7, (1979)
- [9] Olivieri, A., Pistani, F., Penna, R.,:Experimental Investigation of the flow around a fast displacement ship hull model, Journal of Ship research, vol.47, No.3., Sept 2003, pp.247-261
- [10] Van, S. H., Kim, W. J., Yoon, H. S., Lee, Y. Y., Park, I. R.,: Flow measurement around a model ship with propeller and rudder, Experiments in Fluids, vol.40, 2006, pp.533-545
- [11] Wake Survey Device P300q –Manual. Ship Design and Research Centre S.A., Gdansk, Poland, 2006.
- [12] Coleman, H. W. and Steele, W. G., Experimentation and Uncertainty Analysis for Engineers, Wiley & Sons, Inc. 1999 pp. 275.